

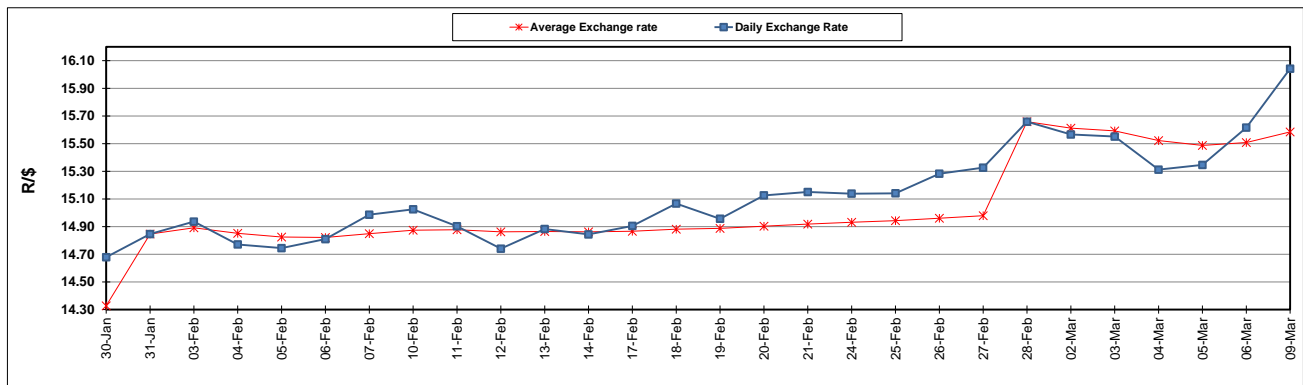
	PETROL 95 ULP	PETROL 93 ULP & LRP	DIESEL 0.05%	DIESEL 0.005%	ILL. PAR.
GAUTENG PUMP PRICE (SA c/l) AS FROM 04/03/2020	1,584.000	1,552.000	-	-	-
WHOLESALE PRICE (SA c/l) AS FROM 04/03/2020	-	-	1,403.260	1,408.660	856.728
SINGLE NATIONAL MAXIMUM RETAIL PRICE	-	-	-	-	1,085.000
BASIC FUEL PRICE - 09/03/2020 (SA c/l)	505.732	492.352	517.917	521.238	499.069
PRESS RELEASE CONTRIBUTION TO BFP 04/03/2020 - 09/03/2020 (SA c/l)	667.970	645.970	683.630	689.030	666.128
UNIT OVER/(UNDER) RECOVERY - 09/03/2020 (SA c/l)	162.238	153.618	165.713	167.792	167.059
AVERAGE BASIC FUEL PRICE 28/02/2020 - 09/03/2020	597.730	585.415	616.198	620.258	596.323
AVERAGE UNIT OVER/(UNDER) RECOVERY 28/02/2020 - 09/03/2020	78.383	68.698	90.575	91.915	98.948

### ANALYSIS MOVEMENT OF AVERAGE OVER/(UNDER) RECOVERY

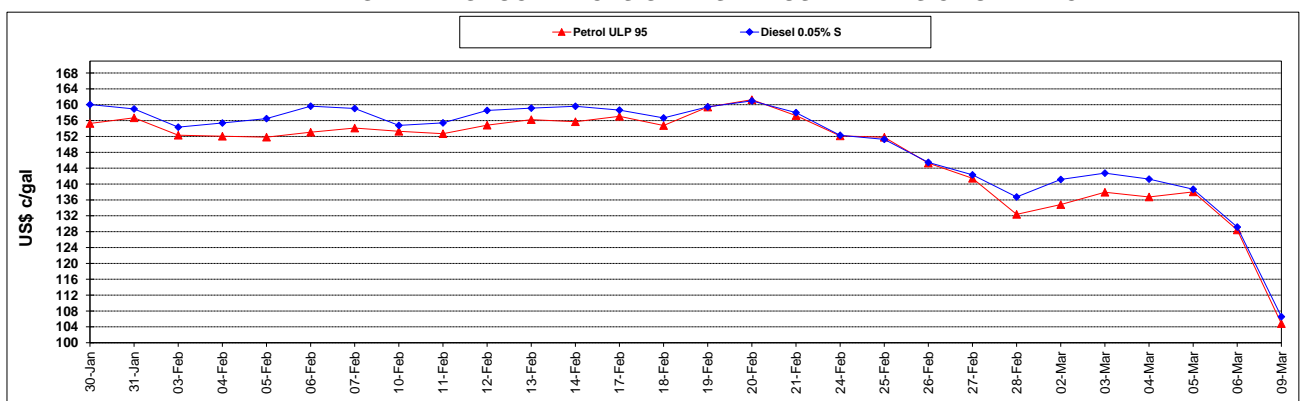
	PETROL 95	PETROL 93	DIESEL 0.05%	DIESEL 0.005%	ILL. PAR.
- MOVEMENT IN INTERNATIONAL PRODUCT PRICES	101.610	91.447	114.520	116.018	122.121
- MOVEMENT IN EXCHANGE RATE	(23.227)	(22.749)	(23.945)	(24.103)	(23.173)
AVERAGE UNIT OVER/(UNDER) RECOVERY 28/02/2020 - 09/03/2020	78.383	68.698	90.575	91.915	98.948

R/\$ EXCHANGE RATE - (R/\$ 16.0420 - 09/03/2020)

### EXCHANGE RATE USED IN BASIC FUEL PRICE



### INTERNATIONAL PRODUCT PRICES OF BASKET USED IN BASIC FUEL PRICE



### BASIC FUEL PRICE IN SA CENTS PER LITRE

